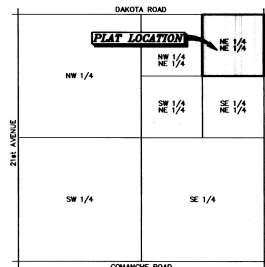
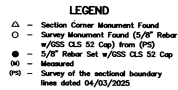


A SUBDIVISION IN THE NORTHEAST QUARTER OF THE NORTHEAST QUARTER OF SECTION 22, TOWNSHIP 20 SOUTH, RANGE 2 WEST OF THE 6TH PRINCIPAL MERIDIAN, MCPHERSON COUNTY, KANSAS.



VICINITY MAP
(NOT TO SCALE)



STATE OF KANSAS)
COUNTY OF McPHERSON) ss

DESCRIPTION:

The above described tract contains **39.54 Acres** and is subject to road right of way easements along the North and East lines thereof.

2023



STATE OF KANSAS }
COUNTY OF McPHERSON } SS

Date: 4-08, 2025

Daniel E. Garber
Daniel E. Garber, PS-683 PS-683
KANSAS PROFESSIONAL SURVEYOR

STATE OF KANSAS)
COUNTY OF McPHERSON) SS

Date: May 20 2025

NOTARY CERTIFICATE

STATE OF KANSAS }
COUNTY OF McPHERSON } SS

Cynthia A. ... Notary Public

 CYNTHIA FRIESEN
Notary Public - State of Kansas
My Appt. Expires 2-2-2027

STATE OF KANSAS }
COUNTY OF McPHERSON } SS

Mid-Kansas Credit Union
104 South Avenue "B"
Moundridge, KS 67107


Meredith Janzen, Loan Manager

STATE OF KANSAS }
COUNTY OF McPHERSON } SS


Signed May 25th 2006

Kathy Nicholson Chairperson

 Secretary
James K. Van Goethem

STATE OF KANSAS }
COUNTY OF McPHERSON } SS

 Chairman
Keith Becker

 Commissioner


Thomas L. Kuester Commissioner

Hollie D. Melroy County Clerk
Hollie D. Melroy

Entered on transfer record this 2nd day of June, 2025

Hollie D. Melroy County Clerk
Hollie D. Melroy

Laurie B. Woldar, Registrar of Deeds
McPherson County, Kansas
Book: LD Page: 12

Receipt #: 236533
Pages Recorded: 1
Cashier Initials: Sheila
Total Fines: \$32.00
Authorized By: 
Date Recorded: 6/20/2025 1:08:11 PM

Data Recorded: 6/20/2025 1:08:11 PM

NOTARY CERTIFICATE

STATE OF KANSAS }
COUNTY OF McPHERSON } SS

Cynthia A. ... Notary Public


 CYNTHIA FRIESEN
Notary Public - State of Kansas
My Appt. Expires 2-2-2027

MORTGAGE HOLDER

STATE OF KANSAS }
COUNTY OF McPHERSON } SS

Mid-Kansas Credit Union
104 South Avenue "B"
Moundridge, KS 67107


Meredith Janzen, Loan Manager

Prepared For:		Description:	
FINAL PLAT		THE NE 1/4 OF THE NE 1/4 SECTION 22, T20S, R2W MCPHERSON COUNTY, KANSAS	
Prepared By:		Surveying Service, P.A.	
			
HUTCHINSON (Main Office)	2904 North Perry St. #7502	PH. 620-665-7832	FAX 620-665-7481
HUTCHINSON (Branch Office)	325 East Main Street #7600	PH. 620-241-4441	FAX 620-241-4438
NEWTON (Branch Office)	511 West 10th St. #771A	PH. 785-238-5953	FAX 785-238-5973
MANITATON (Branch Office)	3228 Kimball Ave. #2 66803	PH. 785-520-6800	
Drawn By: GAO	Scale: 1"=100'	Date of Field Work: February 21st, 2025	Job No:
Checked By: NDS	Date: 04/08/2025	Sheet 1 of 1 Sheet(s)	G2025-118